

See discussions, stats, and author profiles for this publication at: <https://www.researchgate.net/publication/323946100>

Determination of Heavy Metals in Sediments of Masinga Reservoir, Kenya

Article · March 2018

CITATIONS

2

READS

140

3 authors, including:



Julius Nzeve

Machakos University

3 PUBLICATIONS 10 CITATIONS

[SEE PROFILE](#)



Esther Chepkoech Kitur

Kenyatta University

7 PUBLICATIONS 13 CITATIONS

[SEE PROFILE](#)

Some of the authors of this publication are also working on these related projects:



Variations of physico-chemical parameters of five peri-urban reservoirs, Uhuru, Ruiru, Ngewa, Comte and Kianjibbe, Kenya [View project](#)

Determination of Heavy Metals in Sediments of Masinga Reservoir, Kenya.

Julius Kioko Nzeve^{1*}, Esther Chepkoech Kitur¹ and Steven Gichuki Njuguna¹

¹Department of Environmental Sciences, Kenyatta University, P.O.Box 43844 - 00100 Nairobi, Kenya

*Email of Corresponding author: jnzeve@gmail.com

Abstract

In Kenya, heavy metal pollution in aquatic ecosystems due to anthropogenic activities cannot be underestimated. Therefore, an assessment of heavy metal contamination (Cu, Zn, Pb, Cr and Mn) in sediments of Masinga reservoir was carried out between January 2013 and December 2013 in five sampling sites. Heavy metal Concentrations were determined using atomic absorption spectrophotometer (AAS). The data obtained was analyzed using one way analysis of variance and significant differences accepted at $p \leq 0.05$. Post Hoc Tukey's test was used to separate means. Mean heavy metal concentrations (mg/kg) in sediments were Cu (11.38 – 23.67), Zn (60.04 – 75.84), Pb (11.14 – 14.47), Cr (21.39-49.62) and Mn (259.12 – 642.30). There were significant differences in metal concentrations recorded for Cu, Cr, and Mn ($p < 0.05$) between the sites. The concentrations for all metals in sediments were lower than World Health Organization (WHO) set limit except for Cr at Tumutumu sampling site. The high Cr concentration is an indication of untreated or inadequately treated industrial and sewage wastes from the catchment.

Key Words: Heavy metals, Contamination, sediments, Masinga reservoir

1.0 Introduction

Reservoirs play an important role in the livelihood of human populations in Africa. They are used as a source of domestic water supply, irrigation, fishery development, hydropower generation and flood control. Additional benefits of the reservoirs are tourist attraction and opening up of new areas for development (Kitur, 2009). However, the contamination of these aquatic ecosystems with a wide range of pollutants has become a matter of concern over the past few decades (Dirilgen, 2001; Vutukuru, 2005; Yousafzai and Shakoori, 2008; Narayanan and Vinodhini, 2008). Reservoirs have been subjected to various forms of degradation due to pollution arising from domestic wastes, industrial effluent, agricultural run offs and bad fishing practices (Ndimele, 2008). In Kenya a number of hydroelectric power dams have been constructed along the Tana River since the late 1960's. The largest is Masinga dam which began operation in 1981 (Maingi and Marsh, 2002). Masinga dam has been identified as the most effective regulator of the Tana River system because of its great size and its strategic location in the upper reaches of the system (Pacini *et al.*, 1998). However, unregulated deforestation and expansion of cultivation practices onto marginal soils has resulted in significant reservoir siltation, reduced ecosystem function, and more erratic downstream flows (Jacobs *et al.*, 2007). According to Bunyasi *et al.*, (2013), Masinga catchment had lost 62% forest cover (21,180.87 hectares) between the years 1976 and 2011. This has led to increased sedimentation into Masinga reservoir which is estimated at $5.45 \text{ M m}^3/\text{year}$ (Bunyasi *et al.*, 2013) and hence the reservoir has lost 10.1% of its capacity in the last 30 years.

The Contamination of sediments by heavy metals and other pollutants is one of the major threats to aquatic ecosystems and leads to serious environmental problems (Loizidou *et al.*, 1992). The occurrences of enhanced concentrations of heavy metals in sediments may be an indication of human-induced perturbations rather than natural enrichment through geological weathering (Binning and Baird, 2001; Eja *et al.*, 2003). Pollutants released to surface water from industrial and municipal discharges, atmospheric deposition and run off from agricultural, urban and mining areas accumulate to harmful levels in sediments (Chukwujindu *et al.*, 2007). Like soils in the terrestrial system, sediments are important sinks for a range of substances including nutrients, hydrocarbons, pesticides and heavy metals (Baldwin and Howitt, 2007). Heavy metals once absorbed on the sediments are not freely available for aquatic organisms. Under changing environmental conditions (temperature, pH, redox potential, salinity) of the overlying water these toxic metals are released back to the aqueous phase (Soares *et al.*, 1999). Sediments play a significant role in remobilization of contaminants in aquatic systems under favorable conditions and are used for monitoring the health of aquatic ecosystems (Singh *et al.*, 1997; Abraha *et al.*, 2012). They act as both carrier

and sources of contaminants in aquatic environment (Shuhaimi, 2008). Sediments capture hydrophobic chemical pollutants that enter water bodies (McCready *et al.*, 2006) and slowly release the contaminants back into the water column (Chapman and Chapman 1996; McCready *et al.*, 2006). Heavy metal distribution and bioavailability in both sediments and the overlying water column have to be considered to obtain a better understanding of interactions between the organisms and their environment. In addition to the physical and chemical relationships between sediments and contaminants, sediments are of fundamental importance to benthic communities in terms of providing suitable habitats for essential biological processes. A good sediment quality is crucial to maintain a healthy aquatic ecosystem, which ensures good protection of human health and aquatic life. This study, therefore sought to determine the extent of heavy metal concentrations in sediments from Masinga reservoir.

2.0 Materials and Methods

2.1 Study Area

The study was carried out in Masinga reservoir which lies between latitude ($0^{\circ} 45' S$; $1^{\circ} 11' S$) and longitude ($37^{\circ} 0' E$; $37^{\circ} 46' E$) at an altitude of 1056.5 m above sea level. The dam has a full operation surface area of 125km^2 and extends 45km upstream along the Tana River (Figure 1). Masinga dam has a catchment area of $7,355\text{km}^2$ and creates the largest storage and regulatory structure on the Tana River for regulating flows for downstream hydroelectric power dams. The reservoir is a source of livelihood to rural populations who live nearby especially from Machakos, Embu and Murang'a counties.

2.2 Sampling of Sediments

Sampling was carried out once a month for one year (January 2013 – December 2013) in five sampling sites (Figure 1 and Table1). The sediment samples were taken from the bottom surface using an Eckman grab according to method described by Osman and Kloas (2010). For each sample, three sediments grabs were randomly taken, homogenized and kept in clean polyethylene bags. The polythene bags were then labeled to indicate sampling station and date of sampling. Samples were stored in ice box for transportation to the laboratory at Kenyatta University. In the laboratory, the samples were kept in a freezer at $-20^{\circ}C$ until they were processed for heavy metal analysis.

Table 1: Geographical coordinates and water depth of sampling sites in Masinga Reservoir

Sampling Site	Latitude	Longitude	Depth (m)
Kathini (S1)	$00^{\circ} 94 322 S$	$037^{\circ} 43 237 E$	10.33 ± 0.99
Mathauta (S2)	$00^{\circ} 92 571 S$	$037^{\circ} 54 548 E$	22.42 ± 2.50
Manyatta (S3)	$00^{\circ} 88 736 S$	$037^{\circ} 47 279 E$	21.00 ± 6.70
Riakanau (S4)	$00^{\circ} 86 476 S$	$037^{\circ} 38 770E$	7.25 ± 1.14
Tumutumu (S5)	$00^{\circ} 81 416 S$	$037^{\circ} 30 621E$	7.58 ± 2.02

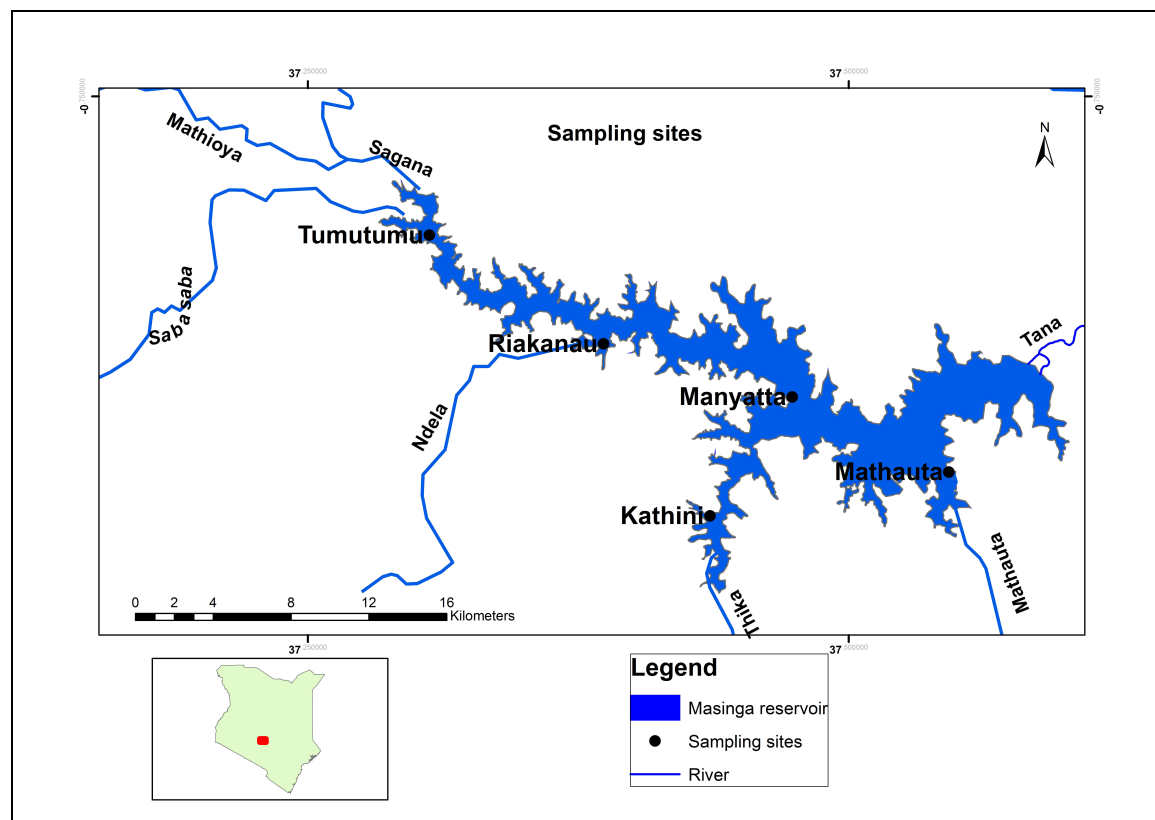


Figure 1. A map of Masinga reservoir showing the five sampling sites

2.3 Processing and Digestion of Sediments for Metal Analysis

Each sediment sample was thawed at room temperature (25⁰C – 28⁰C) and put into pre-acid cleaned evaporating beakers. The sediments were dried at a temperature of 50⁰C in an oven until a constant weight was obtained. The dried sediment samples were ground using a porcelain mortar and pestle then sieved through a 2 mm mesh plastic sieve. For each sediment sample, 2 g was weighed using Shimadzu electronic weighing balance (Model ATX 224) into 100 ml acid cleaned beakers. To each sample, 18 ml of concentrated nitric acid (analytical grade) was added and heated at 100⁰C on a hot plate in a fume hood chamber. A few drops of hydrogen peroxide (analytical grade) were added until there were no brown fumes. All the digested samples were filtered using Whatman No. 42 filter paper into a 50 ml volumetric flask and topped up to the mark with distilled water. The filtrate was analyzed for heavy metals using atomic absorption spectrophotometer (AAS). A blank solution was similarly prepared. The AAS working conditions were set as shown in Table 2.

2.4 Data Analysis

Data analysis was done using a computerized statistical programme (STATISTICA 8.0, 2007). The data were subjected to one way analysis of variance (ANOVA) and significant differences accepted at p ≤ 0.05 (Zar, 2001). In case of significance, the mean values were separated using post-hoc Tukey’s (HSD) test. Descriptive statistics for all collected data were also obtained using STATISTICA software.

Table 2: Instrument (AAS) operating conditions

Element	Cu	Zn	Pd	Cr	Mn
Lamp current (mA)	3	3	8	7	5
Fuel	Acetylene	Acetylene	Acetylene	Acetylene	Acetylene
Support/Oxidant	Air	Air	Air	Nitrous oxide	Air
Wave length (nm)	324.7	213.9	217.0	357.9	279.5
Slit width (nm)	0.5	1.0	1.0	0.2	0.2
Detection limit (ppm)	0.003	0.002	0.02	0.005	0.003

3.0 Results and Discussions

3.1 Copper (Cu) Concentrations (mg/kg)

The mean Cu concentrations in all the sampling sites are shown in Table 3. There was significant difference ($p < 0.05$) in Cu levels between the sites. Mean Cu concentration values ranged from 11.38 ± 2.77 mg/kg (Riakanau) to 23.67 ± 6.54 mg/kg (Tumutumu). Copper gets into aquatic ecosystems from diverse sources such as Cu compounds used in fungicides, algacides, insecticides, wood preservatives, electroplating and azo dye manufacture (Akan *et al.*, 2010). Copper compounds are also used in food additives and copper salts in water supply systems to control biological growths in reservoirs and distribution pipes (Eaton, 2005; WHO, 2004). The high Cu levels at Tumutumu could be attributed to agricultural activities in the catchment especially the use of fertilizers, fungicides and insecticides. Masinga reservoir catchment is a high potential area for agriculture, both dairy and crops. The mean Cu levels in the study area were below the WHO standard values of 25 mg/kg for the survival of aquatic organisms (WHO, 2004). Comparable Cu Concentrations in sediments have been observed in five Rift Valley Lakes (Nakuru, Naivasha, Elementaita, Bogoria and Baringo) in Kenya with a mean ranging from 1.46 – 20.95 mg/kg (Ochieng *et al.*, 2007). In Lake Kanyaboli, mean Cu concentration levels ranging from 1.80 – 30.27 mg/kg have been observed (Ochieng *et al.*, 2008). Heavy metal contamination studies done in Lake Victoria (Winam Gulf) found higher mean Cu levels (3.90 – 150.2 mg/kg) in surface sediments (Ochieng *et al.*, 2008) than those obtained in Masinga reservoir. Other studies carried out elsewhere have found lower mean Cu levels in sediments, for example Tono Irrigation Reservoir (0.25 mg/kg) in Ghana (Anim-Gyampo *et al.*, 2013) and Lake Victoria (3.31 – 3.44 mg/kg), Kenya (Oyoo-Okoth *et al.*, 2010). Saeed and Shaker (2008) obtained higher Cu levels in sediments in the Northern Delta Lakes (36.77 – 315.36 mg/kg), Egypt.

3.2 Zinc (Zn) Concentrations (mg/kg)

There was no significant variation ($p > 0.05$) in Zn concentrations between sites. The highest mean Zn concentrations were recorded at Kathini (75.84 ± 27.684 mg/kg) and the lowest values at Riakanau (60.04 ± 25.633 mg/kg). The source of Zn concentrations in reservoirs' sediments could be from a number of alloys including brass and bronze, batteries, fungicides and pigments (Akan *et al.*, 2010). Other sources could be Zn Carbonates used as pesticides (Anglin-Brown *et al.*, 1995) and textile industries' waste waters (Smith, 1988). The elevated Zn values recorded at Kathini may be attributed to Zn which is used in printing and dyeing processes in textile industries located within the Thika sub catchment. The results on Zn concentrations in all the sampling stations did not exceed the WHO recommended limit of 123 mg/kg (WHO, 2008). However, sediments have the capacity to accumulate more heavy metals with time and remobilize them back to water and the food chain (WHO, 2008), hence the need for regular monitoring. Compared to other studies, mean Zn levels in Masinga reservoir were lower than 96.2 - 229.6 mg/kg recorded in five Rift Valley lakes, Kenya (Ochieng *et al.*, 2007). The Zn levels were however, within same range as those recorded in Lake Kanyaboli (65.0 – 146 mg/kg) and 23.39 – 350.80 mg/kg at Winam gulf (Ochieng *et al.*, 2008).

Table 3: Mean \pm Standard deviation and ranges for heavy metal concentrations in sediments of Masinga Reservoir. Means in same row with different superscripts are significantly different at $p < 0.05$ levels.

Element	Kathini	Mathauta	Manyatta	Riakanau	Tumutumu
Cu (mg/kg)	14.19 ± 6.986^a	19.08 ± 6.822^{ab}	18.21 ± 9.448^{ab}	11.38 ± 2.770^a	23.67 ± 6.543^b
Range	5.20 – 25.03	9.58 – 32.95	6.50 – 31.75	8.00 – 16.37	15.00 – 34.64
Zn (mg/kg)	75.84 ± 27.684^a	71.35 ± 29.874^a	65.81 ± 21.688^a	60.04 ± 25.633^a	69.49 ± 22.434^a
Range	5.20 – 91.07	20.00 – 80.90	10.23 – 82.90	24.42 – 64.55	32.00 – 100.35
Pb (mg/kg)	12.03 ± 5.650^a	13.85 ± 9.488^a	11.14 ± 5.177^a	12.04 ± 5.652^a	14.47 ± 6.463^a
Range	4.25 – 22.63	4.68 – 32.23	3.07 – 17.83	4.15 -24.23	4.45 – 24.68
Cr (mg/kg)	31.94 ± 11.800^b	21.39 ± 6.540^b	37.40 ± 21.236^a	24.93 ± 9.806^b	49.62 ± 14.742^a
Range	7.50 – 43.80	15.50 – 32.30	15.50 – 77.60	11.70 – 39.58	32.90 – 77.10
Mn (mg/kg)	642.39 ± 225.346^a	514.91 ± 275.302^a	606.57 ± 276.864^a	259.12 ± 92.033^b	603.26 ± 276.399^a
Range	287.50 – 831.25	242.92 – 823.75	297.50 – 888.75	138.75 – 351.25	319.58- 937.

3.3 Lead (Pb) Concentrations (mg/kg)

Pb is non essential element and excess of it in the human body can produce a damaging effect on the kidney, liver and nervous system, blood vessels and other tissues (Sharma and Pervez, 2003). The mean Pb concentration levels recorded in sediment at different sampling sites during the study showed modest variations. They ranged from 11.14 ± 5.177 mg/kg in Manyatta to 14.47 ± 6.463 mg/kg in Tumutumu. The possible sources of Pb in sediments include industrial wastes and from water pipes, lead acid batteries, solder, alloys, cable sheathing, pigments, rust inhibitors and plastic stabilizers (WHO 2004, Akan *et al.*, 2010). Pb concentrations observed in this study were lower than the recommended limit of 35 mg/kg for Pb in sediment (WHO, 2004). The highest mean Pb level in Masinga reservoir (14.47 mg/kg) was much lower than 38.98 mg/kg recorded in Rift Valley lakes (Ochieng *et al.*, 2007) and than what Ochieng *et al.*, (2008) found at Lake Kanyaboli (153.90 mg/kg) and Winam Gulf (66.05 mg/kg).

3.4 Chromium (Cr) Concentrations (mg/kg)

Cr in aquatic ecosystems is attributed to industrial and sewage wastes (Akan *et al.*, 2010). The mean Cr concentrations at different sites varied significantly ($p < 0.05$) and were between 21.39 ± 6.540 mg/kg (Mathauta) to 49.62 ± 14.742 mg/kg (Tumutumu). The high mean Cr levels at Tumutumu could be due to industrial wastes and sewage from the towns located within the catchment. The mean Cr concentration obtained at Tumutumu was higher than the recommended limit of 37.5 mg/kg for Cr in sediments (WHO, 2008). Cr and its compounds are known to cause cancer of the lung, nasal cavity and suspected to cause cancer of the stomach and larynx (ATSDR, 2000). For Cr concentrations exceeding 25 mg/kg, a condition known as allergic dermatitis could occur (EPA, 1999). Cr mean levels in Masinga reservoir were higher than 0.42 – 1.12 mg/kg recorded in sediments of Lake Victoria, Kenya (Oyoo-Okoth *et al.*, 2010). However, they were within same range and at the same time below what (Wildi *et al.*, 2004) found (31.54 – 165.01 mg/kg) at different reservoirs in Switzerland. Other studies that have recorded higher mean Cr levels are for example off Bushehr, Persian Gulf 130.5 mg/kg (Karbassi *et al.*, 2005) and Danube river, Serbia 30.6 – 112.5 mg/kg (Milenkovic *et al.*, 2005).

3.5 Manganese (Mn) Concentrations (mg/kg)

Mn is known to be a very abundant element widely distributed in the earth's crust. It is used in manufacturing of dry cell batteries, glass, and fertilizer and in the leather and textile industries (Ziemacki *et al.*, 1989). It is also released through agricultural activities, building activities and quarry processes (Ziemacki *et al.*, 1989). Masinga reservoir catchment has several textile industries found within Thika sub basin and a lot of fertilizer is used in the agricultural sector within the catchment. In this study, the lowest mean Mn concentration was obtained at Riakanau (259.12 ± 92.033 mg/kg) while the highest was recorded at Kathini (642.39 ± 225.346 mg/kg). Kathini sampling site is within the Thika sub basin, hence the elevated Mn levels could be due to industrial and agricultural activities. Compared to other studies done elsewhere in Kenya, the Mn concentrations in this study are lower. For example, Ochieng *et al.*, (2007) while doing similar studies in sediments of five rift valley lakes found ($667.7 - 3,946.8$ mg/kg) and ($1073 - 2,629$ mg/kg) in Lake Kanyaboli. However, Osman and Kloas (2010) found slightly lower mean Mn levels ($159.84 - 351.79$ mg/kg) in sediments sampled along the course of River Nile, Egypt while 419.60 ± 29.99 mg/kg and 850.95 ± 63.96 mg/kg have been recorded in Lake Manzala and Lake Borollus, Egypt respectively (Saeed and Shaker (2008)).

4.0 Conclusions and Recommendations

The study revealed the presence of heavy metals in the sediments of Masinga reservoir. This is a clear sign of the impacts of anthropogenic activities within the catchment to the aquatic ecosystem. The sequence of heavy metal accumulation in sediments was $Mn > Zn > Cr > Cu > Pb$. The heavy metal concentrations (Cu, Zn, Pb, and Mn) in sediments were below WHO set limits for survival of aquatic organisms. However, Cr levels were above the tolerable limit for sediments. Tumutumu had the highest levels of Cr concentrations in sediments while Kathini and Manyatta were slightly polluted with Cr. Therefore, it is concluded that there are industrial wastes that reach Masinga reservoir from the catchment activities and thus, regular monitoring is highly recommended.

Acknowledgements

The authors are grateful to National Commission for Science, Technology and Innovation (NACOSTI), Kenya for funding the research project. The authors are thankful to Mr. Mark Asiango of Kenya Marine Fisheries

Research Institute, Naivasha for his assistance during sample collection. Also, we wish to thank Mr. Salim Mwatshau and Mr. Ahmed L. Soboi of Kenyatta University for their help during sample preparation in the laboratory. Finally, the authors appreciate Mines and Geological Department, Ministry of Mining, Nairobi, Kenya for providing AAS during sample analysis.

References

- Abraha, G. A., Mulu, B.D and Yirgaalem, W.G. (2012). Bioaccumulation of heavy metals in fishes of Hashenge Lake, Tigray, Northern Highlands of Ethiopia. *American Journal of chemistry* 2012, (2)6: 326-334
- Akan, J.C., Abdulrahman, F.I., Sodipo, O.A., Ochanya, A.E and Askira, Y.K. (2010): Heavy metals in sediments from river Ngada, Maiduguri Metropolis, Borno state, Nigeria. *Journal of Environmental Chemistry and Ecotoxicology* Vol. 2(9), pp.131-140
- Anglin-Brown, B., Armour-Brown, A and Lalor, G.C. (1995). Heavy metal pollution in Jamaica: Survey of cadmium, lead and zinc concentrations in the Kintyre and hope flat districts. DOI: 10.1007/DF00146708. *Environ. Geochem. Health*, 17:51-56
- Anim-Gyampo M., Kumi M and Zango M.S. (2013). Heavy metals concentrations in some selected fish species in Tono Irrigation reservoir in Navrongo, Ghana. *Journal of Environment and Earth Science*. ISSN 2224 – 3216. Vol. 3 No. 1, 2013
- ATSDR, Agency for Toxic Substances and Disease Registry (2000). Toxicological profile for chromium. Atlanta, GA: US Department of Health and Human Service, Public Health Service. 1600 Clinton Road N.E, E-29 Atlanta, Georgia 30333 (6-9): 95-134
- Baldwin, D.S and Howitt, A.J. (2007). Baseline assessment of metals and hydrocarbons in the sediments of Lake Mulwala, Australia. *Lakes & Reservoirs: Research and Management* 2007 12:167-174
- Binning, K and Braid, D. (2001). Survey of heavy metals in the sediments of the Swatops river estuary, Port Elizabeth South Africa. *Water SA*, 24: 461- 466
- Bunyasi, M.M., Onywere M. S and Kigomo, K. M. (2013). Sustainable catchment management: Assessment of sedimentation of Masinga reservoir and its implication on the dam's hydropower generation capacity. *International Journal of Humanities and Social Science*, Vol. 3 No.9; May 2013.
- Chapman, D and Chapman, D.E. (Ed). (1996). *Water quality assessments. A guide to the use of biota, sediments and water in environmental monitoring* (2nd Edition, Chapman and Hall, London, 1996).
- Chukwujindu, M.A., Godwin, E.N and Francis, O.A. (2007). Assessment of contamination by heavy metals in sediments of Ase-River, Niger Delta, Nigeria. *Research Journal of environmental Science* 1: 220 - 228
- Dirilgen, N. (2001). Accumulation of heavy metals in fresh water organisms: Assessment of toxic interactions. FAO. Fischer. Technology, 212, pp. 1-13
- Eaton, A. D. (2005). Standard Methods for the Examination of Water and Waste water, 21st Edn. American Public Health association, Washington, ISBN. 0875530478. Pp 343-453
- Eja, C.E., Ogri, O.R and Arikpo, G.E. (2003). Bioconcentration of heavy metals in surface sediments from the Great Kwa river estuary, Calabar, Southeast Nigeria. *J. Nig. Environ. Soci.*, 1: 247- 256
- EPA (1999). Sediment quality guidelines developed for the national status and Trends program. Report No. 6/12/99.
- Jacobs, J.H., Angerer, J., Vitale, J., Srinivasan, R and Kaitho, R. (2007). Mitigating economic damage in Kenya's upper Tana River Basin. An application of Arc – View SWAT. *Journal of Spatial Hydrology* Vol. 7 No. 1 Spring 2007.
- Karbassi, A.R., Nabi-Bidhendi, Gh.R and Bayati, L (2005). Environmental geochemistry of heavy metals in a sediment core off Bushehr, Persian Gulf. *Iranian Journal of Environmental Health, Science and Engineering*, 2005 Vol.2 No.4. pp. 255 - 260
- Kitur, E.C. (2009). *A comparative study of the influence of variations in environmental factors of Phytoplankton properties of selected reservoirs in Central Kenya*. Unpublished PhD Thesis, Kenyatta University, Nairobi, Kenya

- Loizidou, M., Haralambous, K.J and Sakellarides, P.O. (1992). Environmental study of the Marianas Part II. A study on the removal of metals from the Marianas sediment. *Environ. Tech.* 3: 245-252
- Maingi, J.K and Marsh, S.E. (2002). Quantifying hydrologic impacts following dam construction along the Tana River, Kenya. *Journal of Arid Environment*, 50, 53- 79.
- McCready S., Birch G.F and Long E.R.(2006). Metallic and organic contaminants in sediments of Sydney Harbour, Australia and vicinity – A chemical dataset for evaluating sediment quality guidelines. *Environment International*, Vol. 32, No. 4, 2006, pp. 455-465
- Milenkovic, N., Damjanovic, M and Ristic, M (2005). Study of heavy metal pollution in sediments from the Iron Gate (Danube River), Serbia and Montenegro. *Polish Journal of Environmental Studies* Vol. 14, No 6 (2005), 781-787
- Narayanan, M and Vinodhini, R (2008). Bioaccumulation of heavy metals in organs of fresh water fish *Cyprinus carpio* (Common carp). *International Journal of Environmental Science and Technology*, 2(5), pp. 179-182
- Ndimele, P.E. (2008). *Evaluation of phyto-remediative properties of water hyacinth (Eichhornia crassipes) and biostimulants in restoration of oil-polluted Wetland in the Niger Delta*. PhD. Thesis, University of Ibadan, Nigeria
- Ochieng, E. Z., Lalah, J.O and Wandiga, S.O. (2007). Analysis of heavy metals in water and surface sediments in five Rift Valley lakes in Kenya for assessment of recent increase in anthropogenic activities. *Bull. Environ. Contam. Toxicol.* (2007) 79: 570 -576
- Ochieng, E. Z., Lalah, J.O and Wandiga, S.O. (2008). Water quality and trace metal distribution in a pristine lake in the lake Basin in Kenya. *Bull. Environ. Contam. Toxicol.* (2008) 80: 362 – 366
- Osman A.G.M and Kloas W. (2010). Water quality and heavy metal monitoring in water, sediments and tissues of the African catfish *Clarias gariepinus* (Burchell, 1822) from the River Nile, Egypt. *Journal of Environmental Protection*, 2010, Vol. 1. 389 – 400
- Oyoo-Okoth, E., Wim,A., Osano,O., Kraak,M.H.S., Ngure, V., Makwali, J and Orina, P.S. (2010). Use of the fish endoparasite *Ligula intestinalis* (L., 1758) in an intermediate cyprinid host (*Restreneaobola argentea*) for biomonitoring heavy metal contamination in Lake Victoria, Kenya. *Lakes & Reservoirs: Research and Management* 2010, 15: 63 – 73.
- Pacini, N., Harper, D., and Mavuti, K. (1998) Hydrological and ecological considerations in the management of a catchment controlled by a reservoir Cascade: The Tana River, Kenya. *In: The sustainable management of tropical catchments*, edited by D. Harper and T. Brown, pp. 239-258. Indianapolis: John Wiley & Sons.
- Saeed, S.M and Shaker, I. M. (2008). Assessment of heavy metals pollution in water and sediments and their effect on *Oreochromis niloticus* in the Northern delta Lakes, Egypt. *8th International Symposium on Tilapia in Aquaculture, 2008*.
- Sharma, R and Pervez, S. (2003). Enrichment and exposure of particulate lead in a traffic environment in India. *Environ. Geochem.Health*, 25: 297 – 306
- Shuhaimi, M.O. (2008). Metal concentration in the sediments of Richard Lake, Sudbury, Canada and sediment toxicity in an Ampipod *Hyaella azteca*. *J. Environ. Sci. technol.*, 1: 34-41
- Sigh,M.,Ansari, A.A., Muller, G and Sigh, I.B.(1997). Heavy metals in freshly deposited sediments of Gomti River (a tributary of the Ganga River): Effects of human activities. *Environ. Geol.* 29(3-4): 246- 252
- Smith, B (1988). *A Workbook for Pollution Prevention by Source Reduction in Textile Wet Processing*, Pollution Prevention Pays Program of the North Carolina Division of Environmental Management.
- Soares, H.M.V.M., Boaventura, R.A.R., Machado, A.A.S.C and Esteves da Silva, J.C.G. (1999). Sediments as monitors of heavy metal contamination in Ave river basin (Portugal): multivariate analysis of data. *Environmental Pollution*. 105: 311-323
- Vutukuru, S.S (2005). Acute effects of hexavalent chromium on survival, oxygen consumption hematological parameters and some biochemical profiles of the India Major carp, *Labeo rohita*. *International Journal of Environmental Research and Public Health*, 2(3), pp. 456-462

- WHO (2004). Guidelines for drinking water quality: Recommendations 3rd Edn. World Health Organization, Geneva, pp. 516
- WHO (2008). Guidelines for drinking water quality, World Health Organization, Geneva, 2008
- Wildi, W., Dominick, J., Loizeau, J., Thomas, R.L., Favarger, P., Haller, Perroud, A and Peytremann, C .(2004). River, reservoir and lake sediment contamination by heavy metals downstream from urban area of Switzerland. *Lakes and Reservoirs: Research and Management* 2004, 9: 75 – 87
- Yousafzai, A.M and Shakoori, A.R. (2008). Bioaccumulation of chromium, nickel, lead, copper and zinc in the *Tor putilora* as an indicator of the presence of heavy metals loads in River Kabul. *Pakistan Journal of zoology* 4: 341 – 247.
- Zar, J.H. (2001). Biostatistical analysis. Printice –Hall, Englewood Cliffs, N.J
- Ziemacki, G., Viviano, G and Merli, F. (1989). Heavy metals: Sources and environmental presence. *Annali dell' Istituto Superiore di Sanita*, 25 (3), 531- 536

The IISTE is a pioneer in the Open-Access hosting service and academic event management. The aim of the firm is Accelerating Global Knowledge Sharing.

More information about the firm can be found on the homepage:
<http://www.iiste.org>

CALL FOR JOURNAL PAPERS

There are more than 30 peer-reviewed academic journals hosted under the hosting platform.

Prospective authors of journals can find the submission instruction on the following page: <http://www.iiste.org/journals/> All the journals articles are available online to the readers all over the world without financial, legal, or technical barriers other than those inseparable from gaining access to the internet itself. Paper version of the journals is also available upon request of readers and authors.

MORE RESOURCES

Book publication information: <http://www.iiste.org/book/>

IISTE Knowledge Sharing Partners

EBSCO, Index Copernicus, Ulrich's Periodicals Directory, JournalTOCS, PKP Open Archives Harvester, Bielefeld Academic Search Engine, Elektronische Zeitschriftenbibliothek EZB, Open J-Gate, OCLC WorldCat, Universe Digital Library, NewJour, Google Scholar

